



Multipurpose Port Imetame

Enterprise presentation
2020, September

Imetame Port Introduction

The deep water port connecting the East Coast South America with the world

- Depth 17 meters;
- Turning basin with diameter of 670 meters;
- 06 berths, with a total quay extension of 2.090 meters;
- Container terminal capacity 01 million TEUs/year, capable to operate vessels up to 18.000 TEUs (23 container wide), limited to 16m draft;
- Grains terminal with a capacity of 10 million tons/year, and compatible with capesize vessels (babycape);
- General cargo terminal, suitable with breakbulk cargo and fertilizers.

- **Second phase expansion, including a LNG terminal.**

- **With inland links, including the railway access, connecting the Port Imetame with the main production areas in the country (Industrial and agricultural)**



Implementation schedule

Maritime infrastructure

- October, 2020
- July, 2023

Land infrastructure

- May, 2021
- March, 2023

Breakwater

- 01-10-20
- 18-07-23

Dredging

- 28-06-21
- 19-05-23

Berths

- 05-11-21
- 20-11-22

Yard operation

- 29-05-21
- 25-03-22

Project dimension and Capex

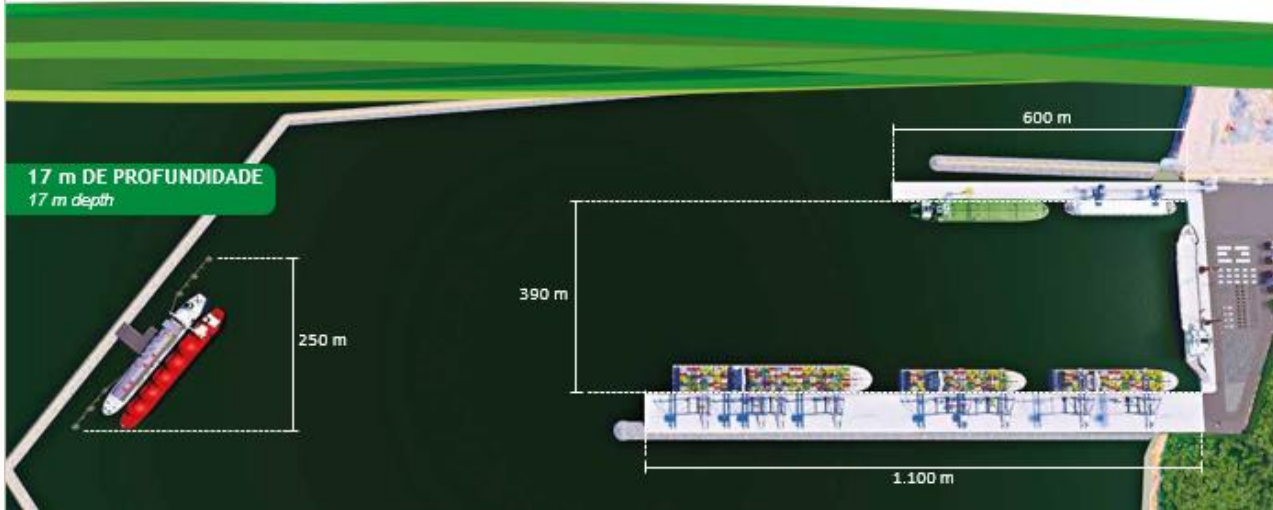
EXCELLENT PORT LOGISTIC SOLUTION

Located at ES 010 state road, in the city of Aracruz - Espírito Santo, near to important consumer centers in the country, Imetame Logística Porto is at 3 km from the Vitória to Minas Railway - EFVM and will have a branch and railway pear of high productivity, besides the proximity to the Vitória airport. The enterprise has a privileged location, at 45 km from the SUDENE area (Federal benefits) and close to an area of 5 million m² available for the implementation of a logistics and industrial platform.



Project dimension and Capex

PREPARED TO ATTEND THE NEXT GENERATION OF SHIPS



With a depth of 17 m, it will be an excellent operational option for long-haul lines that operate with large ships in Brazil, and will also be suited to serve the next generation of container ships, New Post Panamax with LOA of 366 m in length. It will be able to receive Suezmax type ships in the operations of fuel, BabyCape for agribusiness. The depth of the Port will allow the container ships to enter and leave the port fully loaded compared to other ports in Brazil.

TYPE OF CARGO PHASE I

MAIN PLAN

- Container;
- General Cargo;

OTHER OPTION

- Container;
- General Cargo;
- Grains;

MAIN TYPES OF SHIP

New Panamax type

- Length: 366 m;
- Beam (width): 51 m;
- Maximum draft: 15.4 m;
- Capacity: 14,000 TEUs.

Suezmax and Capesize

- Length: 278.5 m;
- Beam (width): 48 m;
- Maximum draft: 16 m;
- Capacity: 150,000 tons.

Project dimension and Capex

COMPETITIVE DIFFERENTIAL IN THE IMPORT AND EXPORT MARKET

Infrastructure

- 01 million m² of area
- 2,340 m of quay;
- Automated gates;
- 400 plugs for refrigerated containers;
- 09 STS- Super Post-Panamax - Twin Lift;
- 27 RTGS- Transtainer;
- 54 Terminal Tractors - internal transportation;
- 04 Reach Stackers;
- 02 Scanners;
- 16 thousand TEUs of static capacity
- 17 m depth;
- 20 thousand m² of warehouse.



Support service

- Cargo consolidation and deconsolidation;
- Yard storage and covered area;
- Completion of Customs Transit;
- Weighing;
- Scanning, among others.

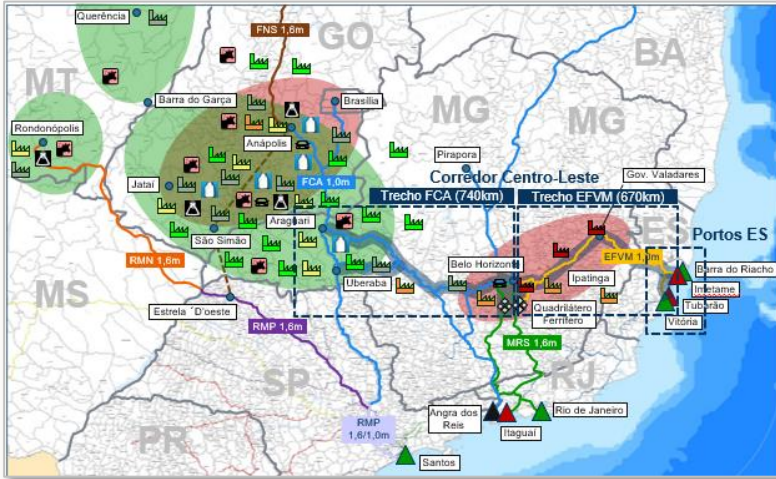


Project dimension and Capex

LONG-HAUL SERVICES

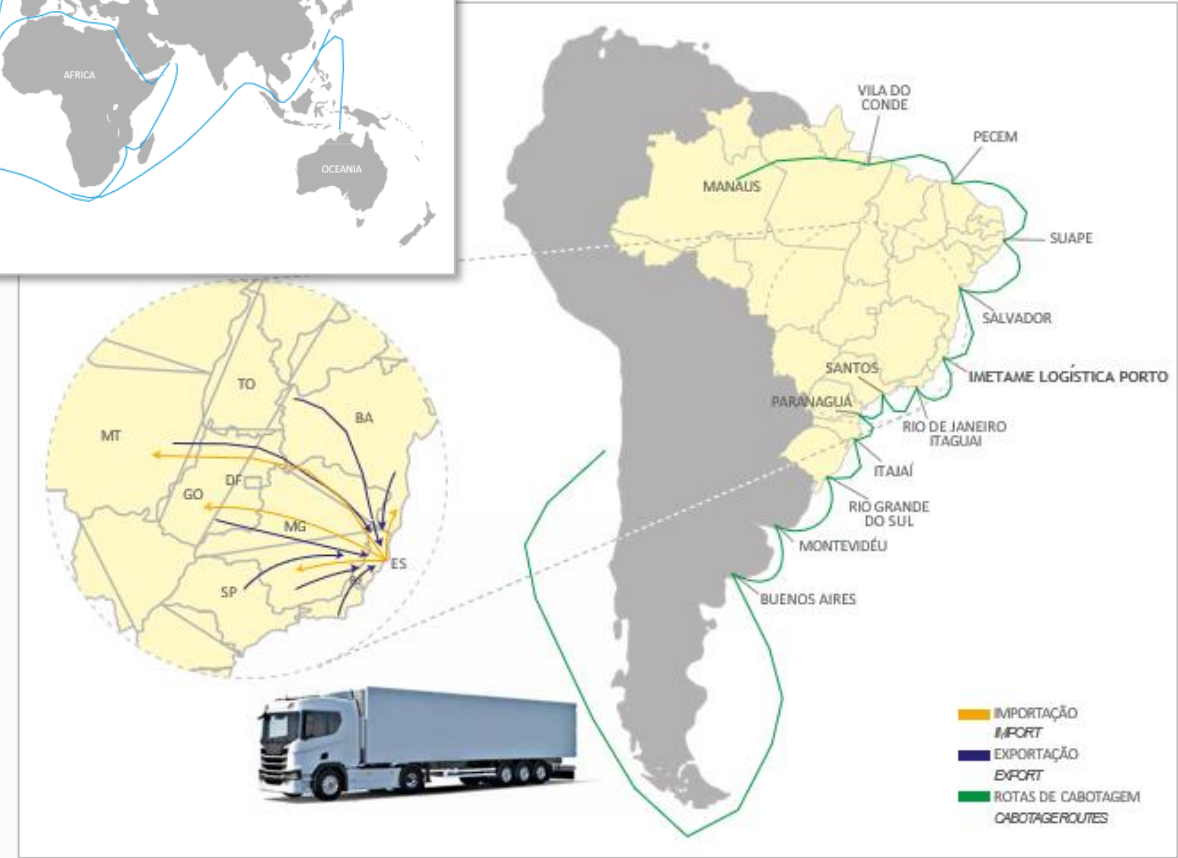
CONNECTING IMPORTANT PRODUCING REGIONS IN BRAZIL TO THE WORLD

CENTRAL-EAST RAILROAD BELT



CABOTAGE ROUTES

Cargo flow from important producing and consuming regions. Logistical assistance by highways and EFVM and FCA railroads.



TOTAL AREA
01 MILLION m²



With a multi-purpose concept, the port is modeled to attend the most diverse productive sectors in support services in the import and export of various loads, as well as in the loading and unloading of containers, general cargo, vehicles, project cargo, solid, liquid and gas bulks, and offshore support. The project has an area of more than 01 million m² and will have an initial infrastructure to handle 300 thousand TEUs per year, with capacity to expand its movement to more than 01 million TEUs.

Project dimension and Capex

CAPEX

PHASE I

Purpose Container and Purpose General Cargo

R\$ 1,135 bi

Purpose Container, General Cargo and Grains

R\$ 1,496 bi

- **Container quay:** extension **1.100 m** – 03 berths.
- **Ship to Shore Cranes** up to **23 boxes wide**
- **General cargo quay:** extension **400 m**
 - **MHC Equipment**
- **Grains Quay** - extension **600 m** - 02 berths
 - **Shiploader capacity 3.000 tons/hour**

RISKS: Benefits and Exchange Rate

- **Exchange rate scenario :** Currency fluctuation risks are inherent to infrastructure projects such as Porto Imetame. In our case we have approximately 50% of the project CAPEX in foreign currency (EUR and US \$), the project brings some possibilities of revenue in US \$ which can mitigate the currency risk.
- **Reidi-Reporto:** The investment amounts include REIDI-REPORTO benefits of an average 34% Federal and State taxes off.

IMETAME GROUP SUSTAINABILITY STRUCTURE

MULTIDISCIPLINARY TEAM :

environmental engineers, biologists, social/economic specialists, oceanographer.



✓ LICENSING PROCESSES:

Full compliance to all conditions Federal, State and Municipality fully attendance

✓ SOCIAL RESPONSIBILITY:

constant and transparent relationship with all stakeholders (public power, communities, third sector, clients and suppliers)

MAIN MONITORING PROGRAMS:

ENVIRONMENTAL PARAMETERS:

- Marine turtles and cetaceans monitoring
- Oceanographic campaigns
- Beach monitoring and erosion control
- Waste and effluent management



✓ ENVIRONMENTAL MONITORING PROGRAMS :

previous and permanent monitoring, aiming at environmental impacts prevention and mitigation during IMETAME's Port installation and operation phases.

TRAINING PROGRAMS:

ENVIRONMENTAL TRAINING CAMPAIGNS:

- Environmental aspects and impacts
- All employee trained at hiring process
- Specific training programmes for operations teams
- Emergency Response Brigades



✓ SOCIAL RESPONSIBILITY "NEW AWARENESS" PROGRAM



"NEW AWARENESS" PROGRAM



✓ SOCIAL RESPONSIBILITY "REFLORESCER" PROGRAM

We sow and plant fruit and medicinal trees contributing to the livelihood and habitat of the fauna, rescuing the tradition of medicinal use of plants and recovering areas of riparian forests. We are committed to do our best to return what nature has done for us!



Reflorescer Program Video Link: https://www.youtube.com/watch?v=DPtC8q_8yvY



“Believe it’s possible, makes the difference”.

WE ARE IMETAME!



Anderson Carvalho

Diretor Comercial

Tel.: +55 (27) 3256-0070 / (27) 99613-3352

anderson.carvalho@imetame.com.br

www.imetame.com.br

THANK YOU!